

MARZONI

LOOKBOOK

FALL · WINTER 2023

MADE FOR YOU
-- Su Misura --



PURE NEW WOOL
30000069

www.MARZONI.it



604 - 623 / 900

94% Wool
6% Cashmere
150cm
400g
Dark Grey



651 - 040 / 1500

95% Wool
5% Cashmere
150cm
290g
Grey



620 - 848 / 900

100% Wool
150cm
340g
Mid-Night Blue





641 - 082 / 900
100% Wool
150cm
350g
Royal Blue

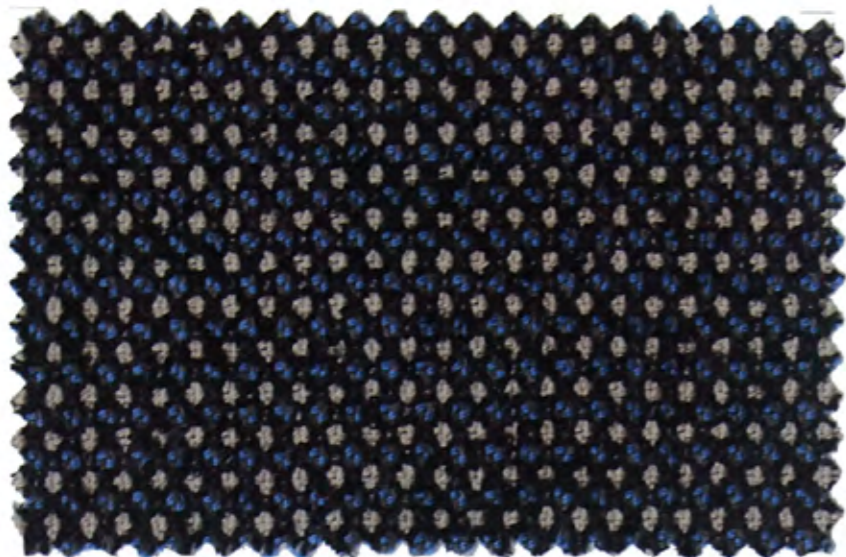


651 - 041 / 1500
95% Wool
5% Cashmere
150cm
290g
Green



620 - 840 / 900
100% Wool
150cm
340g
Green





665 - 107 / 1200

89% Wool
10% Polyamid
1% Elastane
150cm
410g
Blue / White



651 - 042 / 1500

95% Wool
5% Cashmere
150cm
290g
Brown



605 - 466 / 500

100% Cotton
150cm
410g
Brown





MARZONI



641 - 078 / 900
52% Wool
48% Cotton
135cm
270g
Red



651 - 621 / 1500
90% Wool
10% Cashmere
150cm
290g
Red



605 - 476 / 500
100% Cotton
150cm
410g
Brick





651 - 034 / 1200

90% Wool
10% Cashmere
150cm
330g
Grey / Blue



651 - 595 / 1500

90% Wool
10% Cashmere
150cm
290g
Grey



605 - 472 / 500

100% Cotton
150cm
410g
Purple





641 - 154 / 1300

65% Wool
35% Silk
150cm
400g
Blue



651 - 596 / 1500

90% Wool
10% Cashmere
150cm
290g
Grey



620 - 829 / 900

100% Wool
150cm
340g
Beige





641 - 117 / 900

97% Wool
3% Cashmere
150cm
340g
Deep Purple



651 - 597 / 1500

90% Wool
10% Cashmere
150cm
290g
Blue



620 - 823 / 900

100% Wool
150cm
340g
Grey



MARZONI



641 - 096 / 900
100% Wool
150cm
320g
Mid-Night Blue / Yellow



651 - 598 / 1500
90% Wool
10% Cashmere
150cm
290g
Navy



605 - 482 / 500
100% Cotton
150cm
410g
Navy





641 - 155 / 1300

65% Wool
35% Silk
150cm
400g
Mint



651 - 599 / 1500

90% Wool
10% Cashmere
150cm
290g
Charcoal



620 - 889 / 900

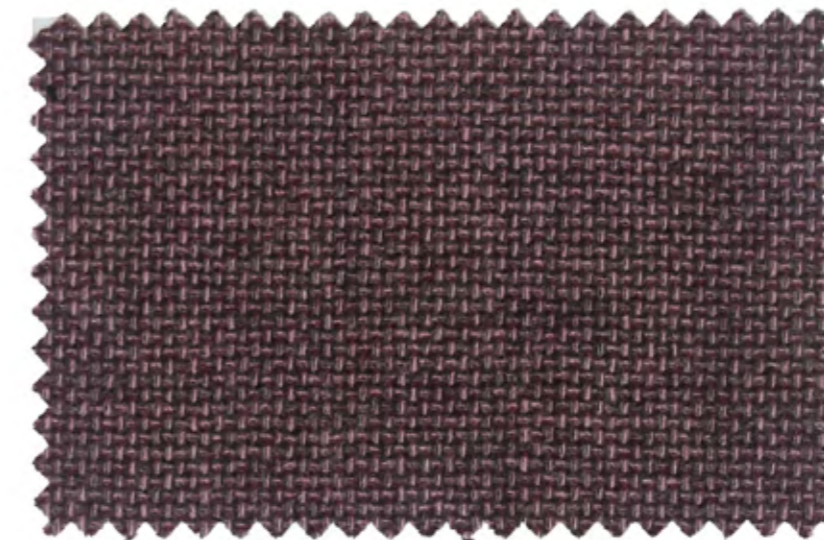
100% Wool
150cm
340g
Grey





641 - 070 / 900

90% Wool
10% Polyamide
150cm
340g
Deep Red / Grey



651 - 600 / 1500

90% Wool
10% Cashmere
150cm
290g
Red



620 - 833 / 900

100% Wool
150cm
340g
Burgundy





651 - 669 / 1200

90% Wool
10% Cashmere
150cm
310g
Taupe / Green



651 - 691 / 1500

90% Wool
10% Cashmere
150cm
290g
Teal



605 - 480 / 500

100% Cotton
150cm
410g
Teal



MARZONI



MARZONI



641 - 142 / 900

100% Wool
150cm
300g
Dark Navy / Tan



651 - 692 / 1500

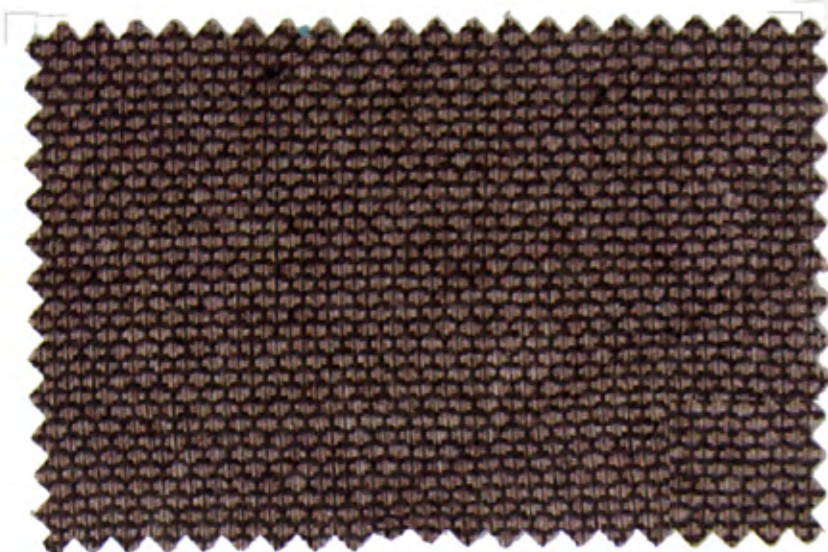
90% Wool
10% Cashmere
150cm
290g
Bluish Grey



620 - 832 / 900

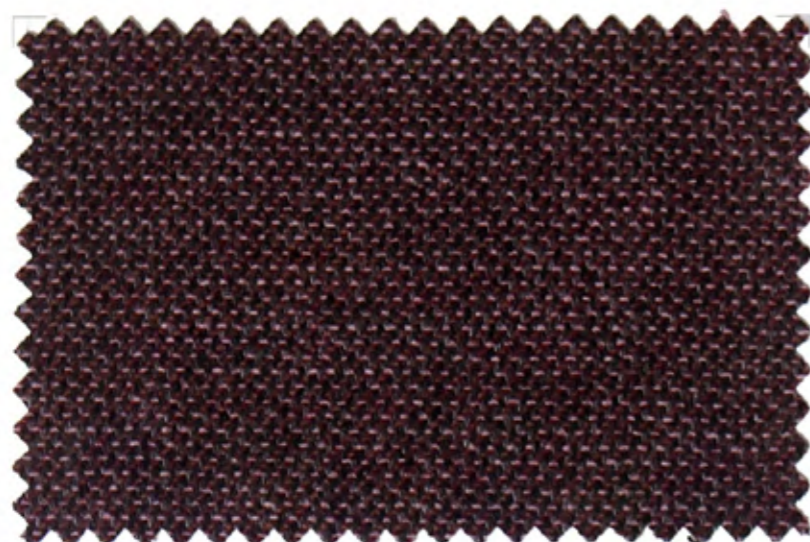
100% Wool
150cm
340g
Dark Brown





651 - 678 / 1200

90% Wool
10% Cashmere
150cm
310g
Brown



651 - 693 / 1500

90% Wool
10% Cashmere
150cm
290g
Burgundy



605 - 466 / 500

100% Cotton
150cm
410g
Brown



MARZONI



MARZONI



651 - 656 / 1200
 100% Wool
 150cm
 270g
 Navy / Green



651 - 690 / 1500
 90% Wool
 10% Cashmere
 150cm
 290g
 Green



605 - 430 / 900
 98% Cotton
 2% Lycra
 145cm
 340g
 Teal Green





641 - 067 / 900

90% Wool
10% Polyamide
150cm
340g
Royal Blue



651 - 622 / 1500

90% Wool
10% Cashmere
150cm
290g
Navy / Black



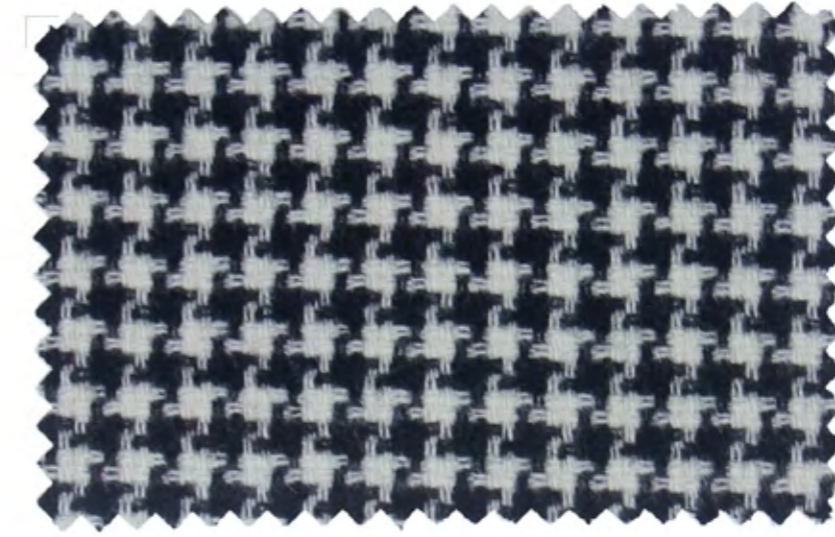
620 - 880 / 900

100% Wool
150cm
340g
Navy





665 - 110 / 1200
99% Wool
1% Elastane
150cm
320g
Navy



651 - 593 / 1500
95% Wool
5% Cashmere
150cm
290g
Black / White



620 - 827 / 900
100% Wool
150cm
340g
White





651 - 663 / 1200

90% Wool
10% Cashmere
150cm
310g
Brown / Green



651 - 683 / 1500

90% Wool
10% Cashmere
150cm
290g
Olive / Black



605 - 486 / 500

100% Cotton
150cm
410g
Olive



MARZONI



641 - 073 / 900
90% Wool
10% Polyamide
150cm
340g
Deep Red / Grey



651 - 684 / 1500
90% Wool
10% Cashmere
150cm
290g
Red / Black



605 - 364 / 500
98% Cotton
2% Lycra
150cm
470g
Deep Purple





641 - 074 / 900

55% Cotton
45% Wool
135cm
300g
Blue



651 - 685 / 1500

90% Wool
10% Cashmere
150cm
290g
Blue / Blue



620 - 844 / 900

100% Wool
150cm
340g
Navy





651 - 675 / 1200
90% Wool
10% Cashmere
150cm
310g
Beige / Maroon



651 - 686 / 1500
90% Wool
10% Cashmere
150cm
290g
Coral / Red



605 - 476 / 500
100% Cotton
150cm
410g
Brick





665 - 111 / 900

99% Wool
1% Elastane
150cm
330g
Grey



651 - 687 / 1500

90% Wool
10% Cashmere
150cm
290g
Grey / White



605 - 364 / 500

98% Cotton
2% Lycra
150cm
470g
Deep Purple



MARZONI



MARZONI



651 - 001 / 1200

90% Wool
10% Cashmere
150cm
300g
Dark Navy / Tan



651 - 688 / 1500

90% Wool
10% Cashmere
150cm
290g
Beige / Blue



620 - 888 / 900

100% Wool
150cm
340g
Purple





651 - 654 / 1200

100% Wool
150cm
270g
Blue / Teal



651 - 689 / 1500

90% Wool
10% Cashmere
150cm
290g
Olive / Black



620 - 839 / 900

100% Wool
150cm
340g
Olive



BRIGHT STOVVE, vul:
go: quondam venta, florē
tiffimum Anoliac Em:
porum

- | | |
|------------------|-------------------|
| 1. S. Peter. | 9. S. Althalowes. |
| 2. S. Mary port. | 10. S. Nicholas. |
| 3. Christchurch. | 11. S. Stephen. |
| 4. S. Laurence. | 12. S. Michael. |
| 5. S. Tones. | 13. S. Thomas. |
| 6. S. Leonard. | 14. The Temple. |
| 7. S. Warbers. | 15. S. James. |
| 8. S. Alpbuis. | |

MARZONI



651 - 660 / 1200
90% Wool
10% Cashmere
150cm
310g
Light Brown



651 - 694 / 1500
90% Wool
10% Cashmere
150cm
290g
Beige / Beige



605 - 456 / 500
100% Cotton
150cm
410g
Khaki





665 - 112 / 900

99% Wool
1% Elastane
150cm
330g
Navy



651 - 594 / 1500

90% Wool
10% Cashmere
150cm
290g
Black / White



620 - 824 / 900

100% Wool
150cm
340g
Charcoal



MARZONI



665 - 557 / 1300

90% Wool
10% Cashmere
150cm
430g
Black



665 - 554 / 1300

90% Wool
10% Cashmere
150cm
430g
Blue



620 - 875 / 900

100% Wool
150cm
340g
Deep Red





665 - 513 / 1300

90% Wool
10% Cashmere
150cm
430g
Grey



665 - 511 / 1300

90% Wool
10% Cashmere
150cm
430g
Navy



620 - 826 / 900

100% Wool
150cm
340g
Black



MARZONI



MARZONI



665 - 508 / 1300
90% Wool
10% Cashmere
150cm
430g
Light Grey



665 - 509 / 1300
90% Wool
10% Cashmere
150cm
430g
Charcoal



620 - 825 / 900
100% Wool
150cm
340g
Dark Charcoal





662 - 014 / 2200

90% Wool
10% Cashmere
150cm
600g
Dark Grey / Grey
Double Face



662 - 018 / 2200

90% Wool
10% Cashmere
150cm
500g
Charcoal



662 - 002 / 2500

90% Wool
10% Cashmere
150cm
600g
Pink / Light Blue
Double Face





MARZONI



665 - 109 / 1200

99% Wool
1% Elastane
150cm
320g
Navy



662 - 019 / 2200

90% Wool
10% Cashmere
150cm
500g
Navy



662 - 010 / 2500

90% Wool
10% Cashmere
150cm
600g
Lavender / Purple
Double Face





662 - 007 / 2500

90% Wool
10% Cashmere
150cm
600g
Peach / Burgundy
Double Face



662 - 020 / 2200

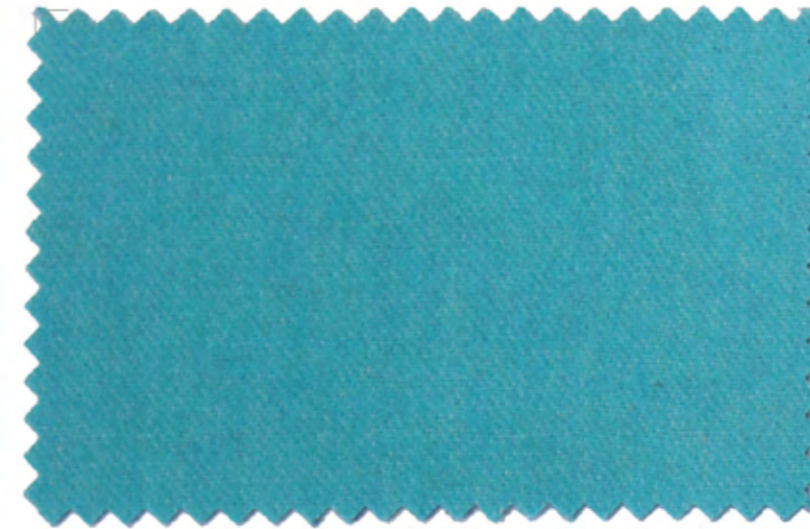
90% Wool
10% Cashmere
150cm
500g
Charcoal



662 - 006 / 2500

90% Wool
10% Cashmere
150cm
600g
Camel / Orange
Double Face





662 - 004 / 2500

90% Wool
10% Cashmere
150cm
600g
Teal / Lavender
Double Face



662 - 022 / 2200

90% Wool
10% Cashmere
150cm
500g
Navy



662 - 005 / 2500

90% Wool
10% Cashmere
150cm
600g
Light Blue / Leaf Green
Double Face





662 - 016 / 2200

90% Wool
10% Cashmere
150cm
600g
Navy / Blue
Double Face



662 - 023 / 2200

90% Wool
10% Cashmere
150cm
500g
Navy



662 - 015 / 2200

90% Wool
10% Cashmere
150cm
600g
Black / Green
Double Face





MARZONI



662 - 008 / 2500
90% Wool
10% Cashmere
150cm
600g
Orange / Brown
Double Face



662 - 024 / 2200
90% Wool
10% Cashmere
150cm
500g
Brown



662 - 009 / 2500
90% Wool
10% Cashmere
150cm
600g
Deep Purple / Purple
Double Face





665 - 113 / 1600

90% Wool
10% Cashmere
150cm
540g
Grey



665 - 114 / 1600

90% Wool
10% Cashmere
150cm
540g
Charcoal



665 - 115 / 1600

90% Wool
10% Cashmere
150cm
540g
Charcoal





MARZONI



665 - 116 / 1600
90% Wool
10% Cashmere
150cm
540g
Navy



665 - 126 / 1600
90% Wool
10% Cashmere
150cm
540g
Light Grey



665 - 117 / 1600
90% Wool
10% Cashmere
150cm
540g
Navy





665 - 141 / 1600

90% Wool
10% Cashmere
150cm
540g
Beige



665 - 142 / 1600

90% Wool
10% Cashmere
150cm
540g
Camel



665 - 133 / 1500

90% Wool
10% Cashmere
150cm
560g
Burgundy





665 - 119 / 1600

90% Wool
10% Cashmere
150cm
540g
Beige



665 - 143 / 1600

90% Wool
10% Cashmere
150cm
540g
Camel



665 - 125 / 1600

90% Wool
10% Cashmere
150cm
540g
Brown





665 - 150 / 1600

90% Wool
10% Cashmere
150cm
540g
Blue



665 - 145 / 1600

90% Wool
10% Cashmere
150cm
540g
Purple



665 - 134 / 1500

90% Wool
10% Cashmere
150cm
560g
Red





665 - 120 / 1600

90% Wool
10% Cashmere
150cm
540g
Beige



665 - 146 / 1600

90% Wool
10% Cashmere
150cm
540g
Navy



665 - 149 / 1600

90% Wool
10% Cashmere
150cm
540g
Black





665 - 118 / 1600

90% Wool
10% Cashmere
150cm
540g
Beige



665 - 148 / 1600

90% Wool
10% Cashmere
150cm
540g
Dark Navy



662 - 001 / 2500

90% Wool
10% Cashmere
150cm
600g
Light Blue / Cream
Double Face





665 - 102 / 1500

61% Wool
16% Mohair
14% Silk
9% Cashmere
150cm
400g
Red / Charcoal



665 - 151 / 1600

90% Wool
10% Cashmere
150cm
540g
Burgundy



608 - 033 / 1500

90% Wool
10% Cashmere
150cm
540g
Purple





665 - 549 / 1300

90% Wool
10% Cashmere
150cm
430g
Beige



665 - 551 / 1300

90% Wool
10% Cashmere
150cm
430g
Camel



665 - 556 / 1300

90% Wool
10% Cashmere
150cm
430g
Dark Navy



MARZONI

MARZONI
all rights reserved