



SCABAL

SS25  
FABRIC COLLECTION  
HIGHLIGHTS



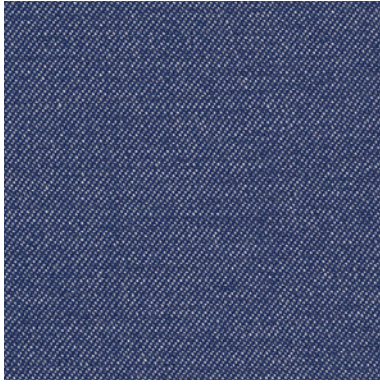
  
SCABAL



SPRING / SUMMER 2025 COLLECTION

## Suit

CASHMERE  
DENIM  
501748



### CASHMERE DENIM

The Cashmere Denim collection is a new introduction answering the need for a more casual look that combines luxury softness with functional stretch and breathability for the warmer months.

To recreate the denim look, cashmere is mixed with cotton and to add comfort 3% elastane has been added which gives a gentle stretch making this collection ideal for both jackets and trousers.

This is a capsule collection of 10 articles all in a twill construction with colours ranging from a bright red and green through to more expected shades of beige, brown, green, grey and blue before closing with 3 shades that feel more like a traditional raw denim in two shades of blue and a black.

  
SCABAL



SPRING / SUMMER 2025 COLLECTION



## Jacket

LIFESTYLE  
706382

## Formal Trousers

NEW DELUXE  
501571



### LIFESTYLE

The lifestyle collection presents a wide selection of qualities and designs to meet the varied needs of a contemporary suit wearer who is looking to create outfits that work, day to night and can be dressed up or down depending on the occasion.

Designs and colours suit the season and feature, light grey, brown and soft blue checks, cream and brown micro houndstooth, rich pick and picks and some soft stripes. White is woven through many of the designs to add lightness and texture to the weave. All articles have an element of stretch which brings an added level of comfort to the wearer, vital for a suit in the warmer months.

For more formal attire the collection closes with two midnight blue articles designed to bring a more formal look and give the opportunity for a statement evening jacket or suit.

### NEW DELUXE

One of the original pillars of the Scabal fabric collections, New Deluxe has been refreshed this season. This is a year-round rainbow of colours brights, lights, pastels, melange and solid colours all feature. New introductions include a soft yellow, vibrant orange, elegant pinks a selection of greens and a beautiful teal blue.

The Super 100's wool makes this collection ideal for everyday wear, it is as easy to care for, as it is to tailor, constructed with a Prunelle weave which gives a comfortable wearing quality making it an indispensable choice for crafting refined suits, trousers, or jackets.

If you are looking for colour New Deluxe is the go-to collection.



SCABAL



SPRING / SUMMER 2025 COLLECTION



## Jacket

LIFESTYLE  
706383

## Formal Trousers

NEW DELUXE  
501572



### LIFESTYLE

The lifestyle collection presents a wide selection of qualities and designs to meet the varied needs of a contemporary suit wearer who is looking to create outfits that work, day to night and can be dressed up or down depending on the occasion.

Designs and colours suit the season and feature, light grey, brown and soft blue checks, cream and brown micro houndstooth, rich pick and picks and some soft stripes. White is woven through many of the designs to add lightness and texture to the weave. All articles have an element of stretch which brings an added level of comfort to the wearer, vital for a suit in the warmer months.

For more formal attire the collection closes with two midnight blue articles designed to bring a more formal look and give the opportunity for a statement evening jacket or suit.

  
SCABAL

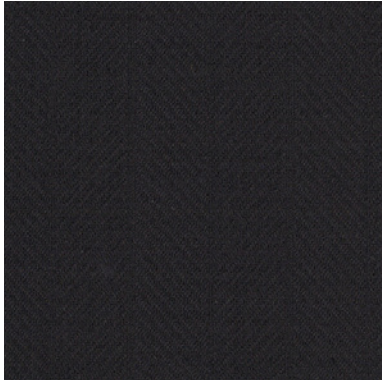


SPRING / SUMMER 2025 COLLECTION



## Suit

LIFESTYLE  
706381



### LIFESTYLE

The lifestyle collection presents a wide selection of qualities and designs to meet the varied needs of a contemporary suit wearer who is looking to create outfits that work, day to night and can be dressed up or down depending on the occasion.

Designs and colours suit the season and feature, light grey, brown and soft blue checks, cream and brown micro houndstooth, rich pick and picks and some soft stripes. White is woven through many of the designs to add lightness and texture to the weave. All articles have an element of stretch which brings an added level of comfort to the wearer, vital for a suit in the warmer months.

For more formal attire the collection closes with two midnight blue articles designed to bring a more formal look and give the opportunity for a statement evening jacket or suit.

  
SCABAL

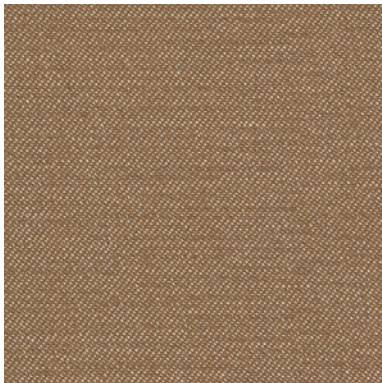


SPRING / SUMMER 2025 COLLECTION



## Jacket

CASHMERE  
DENIM  
501744



## Formal Trousers

FESTIVAL  
853268

### CASHMERE DENIM

The Cashmere Denim collection is a new introduction answering the need for a more casual look that combines luxury softness with functional stretch and breathability for the warmer months.

To recreate the denim look, cashmere is mixed with cotton and to add comfort 3% elastane has been added which gives a gentle stretch making this collection ideal for both jackets and trousers.

This is a capsule collection of 10 articles all in a twill construction with colours ranging from a bright red and green through to more expected shades of beige, brown, green, grey and blue before closing with 3 shades that feel more like a traditional raw denim in two shades of blue and a black.

### FESTIVAL

Salvador Dali once said “A dull outfit has never highlighted a personality” and following his ethos the new Festival collection has been designed to let your personality shine through.

There are many layers to the collection: vibrant fluorescents, a large selection of printed velvets, opulent jacquards, sparkling lurex and Doppione silks. Colours range from glamorous silvers and golds through midnight blues, deep burgundy's and the collection closes with a selection of classic evening wear choices in the subtler shades of charcoal greys, navy's and blacks.



SPRING / SUMMER 2025 COLLECTION



## Jacket

AMALFI  
TREND  
853513

## Formal Trousers

CASHMERE  
COTTON  
501691



### AMALFI TREND

The Amalfi collection is the essence of summer jacketing, the variety of designs, colours and textures all give the impression of a warm day and with a gentle sea breeze.

The selection is wide and varied with over 30 articles. Checks are relaxed with colours effortlessly combined to create statement looks that never feel too overpowering. The interest lies in the texture and depth of the colours and patterns where the use of thicker yarns and the combination of colours with whites create looser fabrics that have lots of character and provide additional breathability for warmer days.

There is a sophisticated colour palette light grey, soft purples, light creams and browns alongside peppermints, pinks, greens which have a linen look. There is also a wide selection of blues including some with a knitted character designed to give a casual feel.

### CASHMERE COTTON

This Scabal Cotton Cashmere collection is the perfect summer staple. Colourful, adaptable and with an added touch of luxury it's ideal for lightweight jacket, trousers or suits.

Leading the way is a selection of cotton & cashmere articles. exceptionally soft to the touch they offer a level of luxury not normally associated with cotton fabrics.

New this season we have a range of fabrics with added stretch making them even more comfortable to wear and bringing an element of crease resistance which makes them ideal as travel garments.

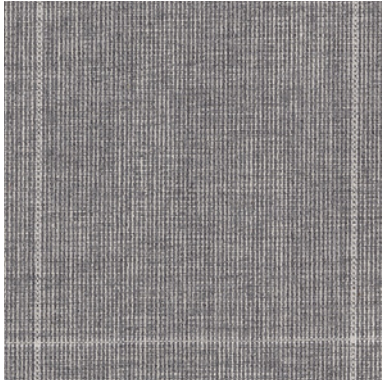
Colours are varied and include summer brights, soft pastels and a large range of traditional tones in shades of beiges, blues and browns.



SPRING / SUMMER 2025 COLLECTION

## Suit

LIFESTYLE  
706063



### LIFESTYLE

The lifestyle collection presents a wide selection of qualities and designs to meet the varied needs of a contemporary suit wearer who is looking to create outfits that work, day to night and can be dressed up or down depending on the occasion.

Designs and colours suit the season and feature, light grey, brown and soft blue checks, cream and brown micro houndstooth, rich pick and picks and some soft stripes. White is woven through many of the designs to add lightness and texture to the weave. All articles have an element of stretch which brings an added level of comfort to the wearer, vital for a suit in the warmer months.

For more formal attire the collection closes with two midnight blue articles designed to bring a more formal look and give the opportunity for a statement evening jacket or suit.

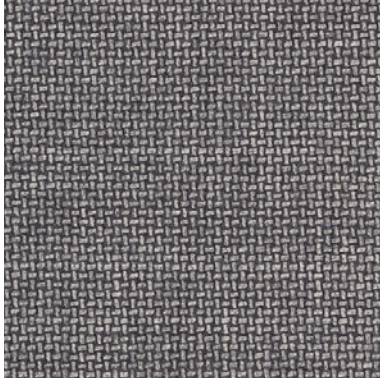




SPRING / SUMMER 2025 COLLECTION

## Suit

LIFESTYLE  
706373



### LIFESTYLE

The lifestyle collection presents a wide selection of qualities and designs to meet the varied needs of a contemporary suit wearer who is looking to create outfits that work, day to night and can be dressed up or down depending on the occasion.

Designs and colours suit the season and feature, light grey, brown and soft blue checks, cream and brown micro houndstooth, rich pick and picks and some soft stripes. White is woven through many of the designs to add lightness and texture to the weave. All articles have an element of stretch which brings an added level of comfort to the wearer, vital for a suit in the warmer months.

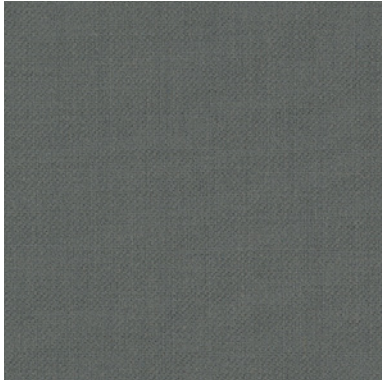
For more formal attire the collection closes with two midnight blue articles designed to bring a more formal look and give the opportunity for a statement evening jacket or suit.



SPRING / SUMMER 2025 COLLECTION

## Suit

NEW DELUXE  
501825



### NEW DELUXE

One of the original pillars of the Scabal fabric collections, New Deluxe has been refreshed this season. This is a year-round rainbow of colours brights, lights, pastels, melange and solid colours all feature. New introductions include a soft yellow, vibrant orange, elegant pinks a selection of greens and a beautiful teal blue.

The Super 100's wool makes this collection ideal for everyday wear, it is as easy to care for, as it is to tailor, constructed with a Prunelle weave which gives a comfortable wearing quality making it an indispensable choice for crafting refined suits, trousers, or jackets.

If you are looking for colour New Deluxe is the go-to collection.



  
SCABAL



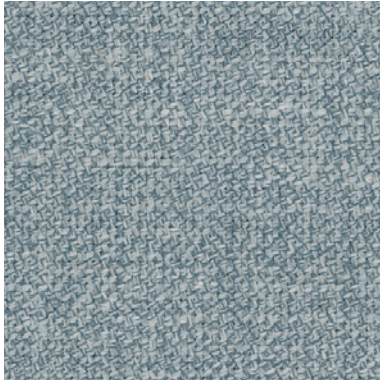
SPRING / SUMMER 2025 COLLECTION

## Jacket

AMALFI  
TREND  
853515

## Formal Trousers

CASHMERE  
COTTON  
501708



### AMALFI TREND

The Amalfi collection is the essence of summer jacketing, the variety of designs, colours and textures all give the impression of a warm day and with a gentle sea breeze.

The selection is wide and varied with over 30 articles. Checks are relaxed with colours effortlessly combined to create statement looks that never feel too overpowering. The interest lies in the texture and depth of the colours and patterns where the use of thicker yarns and the combination of colours with whites create looser fabrics that have lots of character and provide additional breathability for warmer days.

There is a sophisticated colour palette light grey, soft purples, light creams and browns alongside peppermints, pinks, greens which have a linen look. There is also a wide selection of blues including some with a knitted character designed to give a casual feel.

### CASHMERE COTTON

This Scabal Cotton Cashmere collection is the perfect summer staple. Colourful, adaptable and with an added touch of luxury it's ideal for lightweight jacket, trousers or suits.

Leading the way is a selection of cotton & cashmere articles. exceptionally soft to the touch they offer a level of luxury not normally associated with cotton fabrics.

New this season we have a range of fabrics with added stretch making them even more comfortable to wear and bringing an element of crease resistance which makes them ideal as travel garments.

Colours are varied and include summer brights, soft pastels and a large range of traditional tones in shades of beiges, blues and browns.

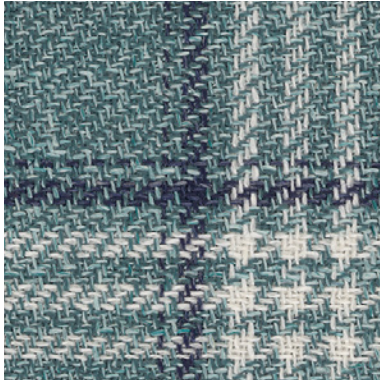


## Jacket

AMALFI  
TREND  
853497

## Formal Trousers

DYNAMIC  
706036



### AMALFI TREND

The Amalfi collection is the essence of summer jacketing, the variety of designs, colours and textures all give the impression of a warm day and with a gentle sea breeze.

The selection is wide and varied with over 30 articles. Checks are relaxed with colours effortlessly combined to create statement looks that never feel too overpowering. The interest lies in the texture and depth of the colours and patterns where the use of thicker yarns and the combination of colours with whites create looser fabrics that have lots of character and provide additional breathability for warmer days.

There is a sophisticated colour palette light grey, soft purples, light creams and browns alongside peppermints, pinks, greens which have a linen look. There is also a wide selection of blues including some with a knitted character designed to give a casual feel.

### DYNAMIC

One of the foundations of the Scabal performance collections, Dynamic is refreshed for the first time since its original launch. This is a range of fabrics designed specifically for the needs of modern life, it has a gentle stretch which makes it comfortable for home working or long journeys, its crease-resistant properties make it ideal to be folded into a carry on suitcase without fear it will need to be pressed upon arrival. It is also shower resistant, perfect for the unpredictable weather patterns of global travelling.

Colour and designs are fresh and contemporary, crisp checks, tonal patterns and a wide selection of plains ranging from soft pastels through to classic greys, blues and black.

This lightweight, practical fabric is ideal for the requirements of a modern, hard-working suit.





SCABAL



SPRING / SUMMER 2025 COLLECTION

## Jacket

AMALFI  
TREND  
853524

## Formal Trousers

CONNECT  
706076



### AMALFI TREND

The Amalfi collection is the essence of summer jacketing, the variety of designs, colours and textures all give the impression of a warm day and with a gentle sea breeze.

The selection is wide and varied with over 30 articles. Checks are relaxed with colours effortlessly combined to create statement looks that never feel too overpowering. The interest lies in the texture and depth of the colours and patterns where the use of thicker yarns and the combination of colours with whites create looser fabrics that have lots of character and provide additional breathability for warmer days.

There is a sophisticated colour palette light grey, soft purples, light creams and browns alongside peppermints, pinks, greens which have a linen look. There is also a wide selection of blues including some with a knitted character designed to give a casual feel.

### CONNECT

A new innovation from Scabal, Connect is a contemporary range of fabrics designed with comfort and softness at its heart. The collection opens with a selection of textured fabrics, all with a knitted appearance and a soft feel, ideal to create the relaxed garments required for a busy modern life. Although they appear knitted, these fabrics are all traditionally woven, it is the skill of the weavers that create this alternative look and finish.

The superior stretch throughout the entire collection ensures that the fabrics are equally suitable for a soft unconstructed jacket as a robust and hard-working pair of trousers. The added stretch brings some crease resistance but more importantly ensures that garments return to their original shape each time they are worn.

The collection closes with a small range of plain fabrics which have a deliberately overconstructed finish, and when combined with the colour palette of browns, greens, camel, blues and greys gives them a very modern look.

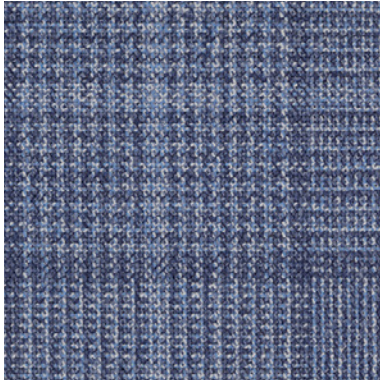
  
SCABAL



SPRING / SUMMER 2025 COLLECTION

## Suit

LIFESTYLE  
706371



### LIFESTYLE

The lifestyle collection presents a wide selection of qualities and designs to meet the varied needs of a contemporary suit wearer who is looking to create outfits that work, day to night and can be dressed up or down depending on the occasion.

Designs and colours suit the season and feature, light grey, brown and soft blue checks, cream and brown micro houndstooth, rich pick and picks and some soft stripes. White is woven through many of the designs to add lightness and texture to the weave. All articles have an element of stretch which brings an added level of comfort to the wearer, vital for a suit in the warmer months.

For more formal attire the collection closes with two midnight blue articles designed to bring a more formal look and give the opportunity for a statement evening jacket or suit.



  
SCABAL



SPRING / SUMMER 2025 COLLECTION

## Jacket

AMALFI  
TREND  
853510

## Formal Trousers

CONNECT  
706069



### AMALFI TREND

The Amalfi collection is the essence of summer jacketing, the variety of designs, colours and textures all give the impression of a warm day and with a gentle sea breeze.

The selection is wide and varied with over 30 articles. Checks are relaxed with colours effortlessly combined to create statement looks that never feel too overpowering. The interest lies in the texture and depth of the colours and patterns where the use of thicker yarns and the combination of colours with whites create looser fabrics that have lots of character and provide additional breathability for warmer days.

There is a sophisticated colour palette light grey, soft purples, light creams and browns alongside peppermints, pinks, greens which have a linen look. There is also a wide selection of blues including some with a knitted character designed to give a casual feel.

### CONNECT

A new innovation from Scabal, Connect is a contemporary range of fabrics designed with comfort and softness at its heart. The collection opens with a selection of textured fabrics, all with a knitted appearance and a soft feel, ideal to create the relaxed garments required for a busy modern life. Although they appear knitted, these fabrics are all traditionally woven, it is the skill of the weavers that create this alternative look and finish.

The superior stretch throughout the entire collection ensures that the fabrics are equally suitable for a soft unconstructed jacket as a robust and hard-working pair of trousers. The added stretch brings some crease resistance but more importantly ensures that garments return to their original shape each time they are worn.

The collection closes with a small range of plain fabrics which have a deliberately overconstructed finish, and when combined with the colour palette of browns, greens, camel, blues and greys gives them a very modern look.

  
SCABAL



SPRING / SUMMER 2025 COLLECTION

## Suit

LIFESTYLE  
706365



### LIFESTYLE

The lifestyle collection presents a wide selection of qualities and designs to meet the varied needs of a contemporary suit wearer who is looking to create outfits that work, day to night and can be dressed up or down depending on the occasion.

Designs and colours suit the season and feature, light grey, brown and soft blue checks, cream and brown micro houndstooth, rich pick and picks and some soft stripes. White is woven through many of the designs to add lightness and texture to the weave. All articles have an element of stretch which brings an added level of comfort to the wearer, vital for a suit in the warmer months.

For more formal attire the collection closes with two midnight blue articles designed to bring a more formal look and give the opportunity for a statement evening jacket or suit.





SPRING / SUMMER 2025 COLLECTION

## Suit

LIFESTYLE  
706366



### LIFESTYLE

The lifestyle collection presents a wide selection of qualities and designs to meet the varied needs of a contemporary suit wearer who is looking to create outfits that work, day to night and can be dressed up or down depending on the occasion.

Designs and colours suit the season and feature, light grey, brown and soft blue checks, cream and brown micro houndstooth, rich pick and picks and some soft stripes. White is woven through many of the designs to add lightness and texture to the weave. All articles have an element of stretch which brings an added level of comfort to the wearer, vital for a suit in the warmer months.

For more formal attire the collection closes with two midnight blue articles designed to bring a more formal look and give the opportunity for a statement evening jacket or suit.



SCABAL



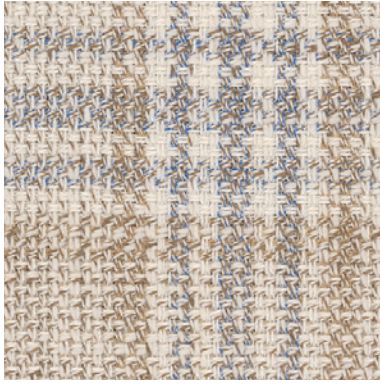
SPRING / SUMMER 2025 COLLECTION

## Jacket

AMALFI  
TREND  
853501

## Formal Trousers

CASHMERE  
COTTON  
501691



### AMALFI TREND

The Amalfi collection is the essence of summer jacketing, the variety of designs, colours and textures all give the impression of a warm day and with a gentle sea breeze.

The selection is wide and varied with over 30 articles. Checks are relaxed with colours effortlessly combined to create statement looks that never feel too overpowering. The interest lies in the texture and depth of the colours and patterns where the use of thicker yarns and the combination of colours with whites create looser fabrics that have lots of character and provide additional breathability for warmer days.

There is a sophisticated colour palette light grey, soft purples, light creams and browns alongside peppermints, pinks, greens which have a linen look. There is also a wide selection of blues including some with a knitted character designed to give a casual feel.

### CASHMERE COTTON

This Scabal Cotton Cashmere collection is the perfect summer staple. Colourful, adaptable and with an added touch of luxury it's ideal for lightweight jacket, trousers or suits.

Leading the way is a selection of cotton & cashmere articles. exceptionally soft to the touch they offer a level of luxury not normally associated with cotton fabrics.

New this season we have a range of fabrics with added stretch making them even more comfortable to wear and bringing an element of crease resistance which makes them ideal as travel garments.

Colours are varied and include summer brights, soft pastels and a large range of traditional tones in shades of beiges, blues and browns.





SCABAL



SPRING / SUMMER 2025 COLLECTION

## Jacket

MOSAIC  
853537

## Formal Trousers

NEW DELUXE  
501553



### MOSAIC

Mosaic is a celebration of summer checks, what makes it special is the way the colours are blended to create the patterns. Look closely to discover unexpected combinations: warm yellows, light greys, delicate pinks and pastel peppermints all feature alongside a light summer palette that stretches from light beiges to a mix of ocean blues.

Woven into a fine twill constructed from very fine yarn, the Mosaic collection has a superior finish and a good construction, ideal for jacket tailoring.

The 100% Super 130's wool is finished to give a dry hand feel which makes it as practical as it is beautiful choice for the summer months.

### NEW DELUXE

One of the original pillars of the Scabal fabric collections, New Deluxe has been refreshed this season. This is a year-round rainbow of colours brights, lights, pastels, melange and solid colours all feature. New introductions include a soft yellow, vibrant orange, elegant pinks a selection of greens and a beautiful teal blue.

The Super 100's wool makes this collection ideal for everyday wear, it is as easy to care for, as it is to tailor, constructed with a Prunelle weave which gives a comfortable wearing quality making it an indispensable choice for crafting refined suits, trousers, or jackets.

If you are looking for colour New Deluxe is the go-to collection.



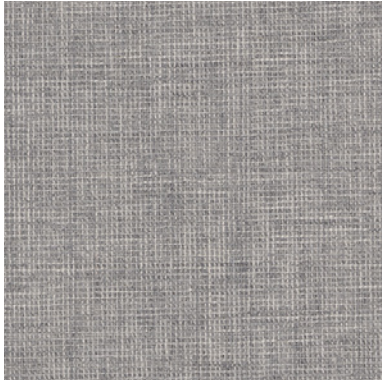
SCABAL



SPRING / SUMMER 2025 COLLECTION

## Suit

LIFESTYLE  
706362



### LIFESTYLE

The lifestyle collection presents a wide selection of qualities and designs to meet the varied needs of a contemporary suit wearer who is looking to create outfits that work, day to night and can be dressed up or down depending on the occasion.

Designs and colours suit the season and feature, light grey, brown and soft blue checks, cream and brown micro houndstooth, rich pick and picks and some soft stripes. White is woven through many of the designs to add lightness and texture to the weave. All articles have an element of stretch which brings an added level of comfort to the wearer, vital for a suit in the warmer months.

For more formal attire the collection closes with two midnight blue articles designed to bring a more formal look and give the opportunity for a statement evening jacket or suit.





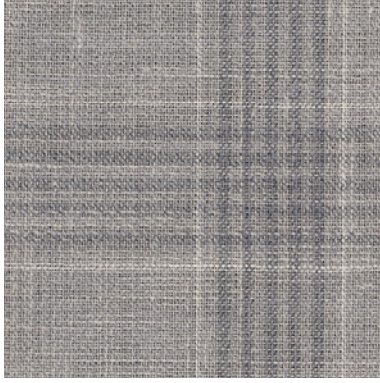
SCABAL



SPRING / SUMMER 2025 COLLECTION

## Suit

LIFESTYLE  
706361



### LIFESTYLE

The lifestyle collection presents a wide selection of qualities and designs to meet the varied needs of a contemporary suit wearer who is looking to create outfits that work, day to night and can be dressed up or down depending on the occasion.

Designs and colours suit the season and feature, light grey, brown and soft blue checks, cream and brown micro houndstooth, rich pick and picks and some soft stripes. White is woven through many of the designs to add lightness and texture to the weave. All articles have an element of stretch which brings an added level of comfort to the wearer, vital for a suit in the warmer months.

For more formal attire the collection closes with two midnight blue articles designed to bring a more formal look and give the opportunity for a statement evening jacket or suit.



SCABAL



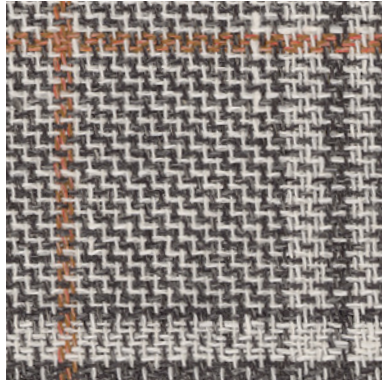
SPRING / SUMMER 2025 COLLECTION

## Jacket

AMALFI  
TREND  
853495

## Outerwear

PURE LINEN  
802991



## Formal Trousers

PURE LINEN  
802991

### AMALFI TREND

The Amalfi collection is the essence of summer jacketing, the variety of designs, colours and textures all give the impression of a warm day and with a gentle sea breeze.

The selection is wide and varied with over 30 articles. Checks are relaxed with colours effortlessly combined to create statement looks that never feel too overpowering. The interest lies in the texture and depth of the colours and patterns where the use of thicker yarns and the combination of colours with whites create looser fabrics that have lots of character and provide additional breathability for warmer days.

There is a sophisticated colour palette light grey, soft purples, light creams and browns alongside peppermints, pinks, greens which have a linen look. There is also a wide selection of blues including some with a knitted character designed to give a casual feel.



  
SCABAL



SPRING / SUMMER 2025 COLLECTION

## Jacket

AMALFI  
TREND  
853493

## Formal Trousers

CAPRI  
501631



### AMALFI TREND

The Amalfi collection is the essence of summer jacketing, the variety of designs, colours and textures all give the impression of a warm day and with a gentle sea breeze.

The selection is wide and varied with over 30 articles. Checks are relaxed with colours effortlessly combined to create statement looks that never feel too overpowering. The interest lies in the texture and depth of the colours and patterns where the use of thicker yarns and the combination of colours with whites create looser fabrics that have lots of character and provide additional breathability for warmer days.

There is a sophisticated colour palette light grey, soft purples, light creams and browns alongside peppermints, pinks, greens which have a linen look. There is also a wide selection of blues including some with a knitted character designed to give a casual feel.

### CAPRI

The Capri collection has been refreshed with new shades and tones. This is a comprehensive rainbow of nearly 50 colours, all constructed from 100% wool in a year-round weight of 260gm. The fabrics are woven in a plain weave but the colour levels vary in intensity, due to the different dyeing methods used to create the cloth. Some are piece dyed giving a consistent tone across the fabric which adds a rich depth whilst others are combined with white yarn which adds a melange feel to the finish.

This versatile collection can be used for suits, jackets and trousers as the perfect accompaniment to many of the other Scabal jacketing collections.

  
SCABAL



SPRING / SUMMER 2025 COLLECTION

## Suit

LIFESTYLE  
706364



### LIFESTYLE

The lifestyle collection presents a wide selection of qualities and designs to meet the varied needs of a contemporary suit wearer who is looking to create outfits that work, day to night and can be dressed up or down depending on the occasion.

Designs and colours suit the season and feature, light grey, brown and soft blue checks, cream and brown micro houndstooth, rich pick and picks and some soft stripes. White is woven through many of the designs to add lightness and texture to the weave. All articles have an element of stretch which brings an added level of comfort to the wearer, vital for a suit in the warmer months.

For more formal attire the collection closes with two midnight blue articles designed to bring a more formal look and give the opportunity for a statement evening jacket or suit.





## Suit

LIFESTYLE  
706367



### LIFESTYLE

The lifestyle collection presents a wide selection of qualities and designs to meet the varied needs of a contemporary suit wearer who is looking to create outfits that work, day to night and can be dressed up or down depending on the occasion.

Designs and colours suit the season and feature, light grey, brown and soft blue checks, cream and brown micro houndstooth, rich pick and picks and some soft stripes. White is woven through many of the designs to add lightness and texture to the weave. All articles have an element of stretch which brings an added level of comfort to the wearer, vital for a suit in the warmer months.

For more formal attire the collection closes with two midnight blue articles designed to bring a more formal look and give the opportunity for a statement evening jacket or suit.



SCABAL



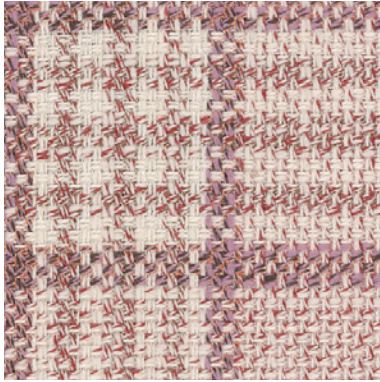
SPRING / SUMMER 2025 COLLECTION

## Jacket

AMALFI  
TREND  
853503

## Formal Trousers

PURE LINEN  
802993



### AMALFI TREND

The Amalfi collection is the essence of summer jacketing, the variety of designs, colours and textures all give the impression of a warm day and with a gentle sea breeze.

The selection is wide and varied with over 30 articles. Checks are relaxed with colours effortlessly combined to create statement looks that never feel too overpowering. The interest lies in the texture and depth of the colours and patterns where the use of thicker yarns and the combination of colours with whites create looser fabrics that have lots of character and provide additional breathability for warmer days.

There is a sophisticated colour palette light grey, soft purples, light creams and browns alongside peppermints, pinks, greens which have a linen look. There is also a wide selection of blues including some with a knitted character designed to give a casual feel.

### PURE LINEN

Pure Linen is a must-have for summer staples. The Scabal collection offers a selection of weights, feels and colours to answer the needs of summer tailoring.

Opening with 20 delavé articles, this soft washed linen is available in colours ranging from bright reds, vibrant greens, sky blues as well some essential shades of dark blues, light creams and natural browns. Moving through the collection you will see 8 shades in a heavier 260gm and for those looking for more structure a small selection at 400gm again in the essential linen colours, off white, cream, beige and navy blue.





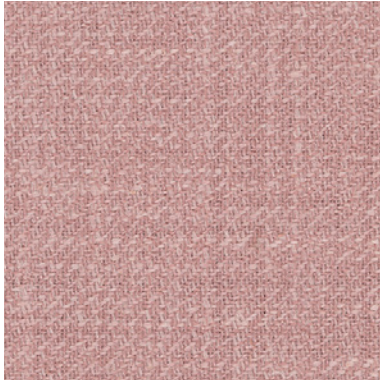
SPRING / SUMMER 2025 COLLECTION

## Jacket

AMALFI TREND  
853514

## Formal Trousers

COSMOPOLITAN  
705961



### AMALFI TREND

The Amalfi collection is the essence of summer jacketing, the variety of designs, colours and textures all give the impression of a warm day and with a gentle sea breeze.

The selection is wide and varied with over 30 articles. Checks are relaxed with colours effortlessly combined to create statement looks that never feel too overpowering. The interest lies in the texture and depth of the colours and patterns where the use of thicker yarns and the combination of colours with whites create looser fabrics that have lots of character and provide additional breathability for warmer days.

There is a sophisticated colour palette light grey, soft purples, light creams and browns alongside peppermints, pinks, greens which have a linen look. There is also a wide selection of blues including some with a knitted character designed to give a casual feel.

### COSMOPOLITAN

Cosmopolitan is an ideal collection of summer suiting's designed to survive the urban jungle in the heat of summer without losing your sartorial edge.

Made from superfine Merino wool, this tropical weave fabric range is as varied as its name suggests. The colours and designs have been chosen to add to the feel of lightness in the fabric. Stripes are narrow and elegant, checks are subtle and tonal and overall the colours are considered and interesting ranging from the contemporary hues of beige, racing green, deep burgundy and rusty brown to a wide selection of more traditional suiting tones of greys, blues and blacks.

Summer in the city has never been so stylish.

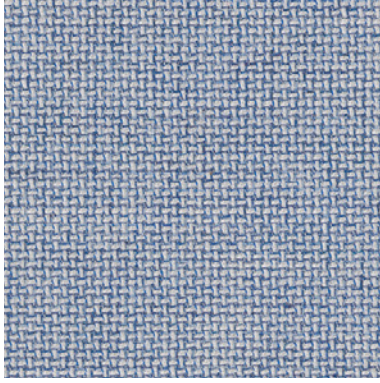
---



SPRING / SUMMER 2025 COLLECTION

## Suit

LIFESTYLE  
706372



## New lining

Lemons



### LIFESTYLE

The lifestyle collection presents a wide selection of qualities and designs to meet the varied needs of a contemporary suit wearer who is looking to create outfits that work, day to night and can be dressed up or down depending on the occasion.

Designs and colours suit the season and feature, light grey, brown and soft blue checks, cream and brown micro houndstooth, rich pick and picks and some soft stripes. White is woven through many of the designs to add lightness and texture to the weave. All articles have an element of stretch which brings an added level of comfort to the wearer, vital for a suit in the warmer months.

For more formal attire the collection closes with two midnight blue articles designed to bring a more formal look and give the opportunity for a statement evening jacket or suit.



  
SCABAL



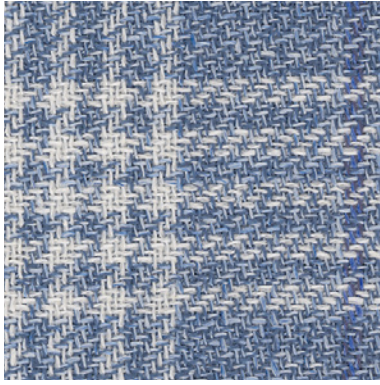
SPRING / SUMMER 2025 COLLECTION

## Jacket

AMALFI  
TREND  
853496

## Formal Trousers

PURE LINEN  
803001



### AMALFI TREND

The Amalfi collection is the essence of summer jacketing, the variety of designs, colours and textures all give the impression of a warm day and with a gentle sea breeze.

The selection is wide and varied with over 30 articles. Checks are relaxed with colours effortlessly combined to create statement looks that never feel too overpowering. The interest lies in the texture and depth of the colours and patterns where the use of thicker yarns and the combination of colours with whites create looser fabrics that have lots of character and provide additional breathability for warmer days.

There is a sophisticated colour palette light grey, soft purples, light creams and browns alongside peppermints, pinks, greens which have a linen look. There is also a wide selection of blues including some with a knitted character designed to give a casual feel.

### PURE LINEN

Pure Linen is a must-have for summer staples. The Scabal collection offers a selection of weights, feels and colours to answer the needs of summer tailoring.

Opening with 20 delavé articles, this soft washed linen is available in colours ranging from bright reds, vibrant greens, sky blues as well some essential shades of dark blues, light creams and natural browns. Moving through the collection you will see 8 shades in a heavier 260gm and for those looking for more structure a small selection at 400gm again in the essential linen colours, off white, cream, beige and navy blue.



## Suit

LIFESTYLE  
706369



### LIFESTYLE

The lifestyle collection presents a wide selection of qualities and designs to meet the varied needs of a contemporary suit wearer who is looking to create outfits that work, day to night and can be dressed up or down depending on the occasion.

Designs and colours suit the season and feature, light grey, brown and soft blue checks, cream and brown micro houndstooth, rich pick and picks and some soft stripes. White is woven through many of the designs to add lightness and texture to the weave. All articles have an element of stretch which brings an added level of comfort to the wearer, vital for a suit in the warmer months.

For more formal attire the collection closes with two midnight blue articles designed to bring a more formal look and give the opportunity for a statement evening jacket or suit.





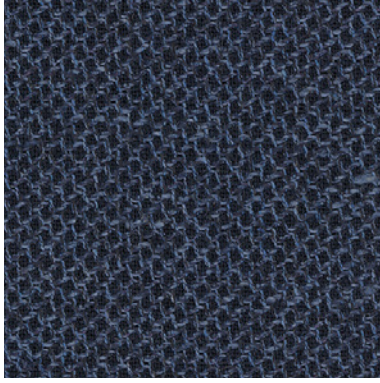
SPRING / SUMMER 2025 COLLECTION

## Jacket

AMALFI  
TREND  
853522

## Formal Trousers

PURE LINEN  
802998



### AMALFI TREND

The Amalfi collection is the essence of summer jacketing, the variety of designs, colours and textures all give the impression of a warm day and with a gentle sea breeze.

The selection is wide and varied with over 30 articles. Checks are relaxed with colours effortlessly combined to create statement looks that never feel too overpowering. The interest lies in the texture and depth of the colours and patterns where the use of thicker yarns and the combination of colours with whites create looser fabrics that have lots of character and provide additional breathability for warmer days.

There is a sophisticated colour palette light grey, soft purples, light creams and browns alongside peppermints, pinks, greens which have a linen look. There is also a wide selection of blues including some with a knitted character designed to give a casual feel.

### PURE LINEN

Pure Linen is a must-have for summer staples. The Scabal collection offers a selection of weights, feels and colours to answer the needs of summer tailoring.

Opening with 20 delavé articles, this soft washed linen is available in colours ranging from bright reds, vibrant greens, sky blues as well some essential shades of dark blues, light creams and natural browns. Moving through the collection you will see 8 shades in a heavier 260gm and for those looking for more structure a small selection at 400gm again in the essential linen colours, off white, cream, beige and navy blue.

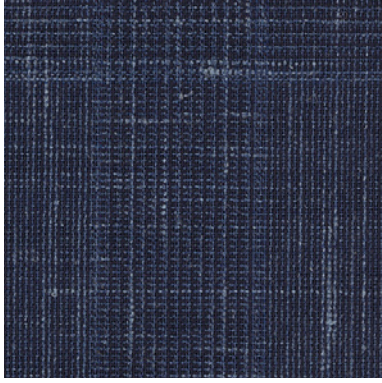
  
SCABAL



SPRING / SUMMER 2025 COLLECTION

## Suit

LIFESTYLE  
706370



### LIFESTYLE

The lifestyle collection presents a wide selection of qualities and designs to meet the varied needs of a contemporary suit wearer who is looking to create outfits that work, day to night and can be dressed up or down depending on the occasion.

Designs and colours suit the season and feature, light grey, brown and soft blue checks, cream and brown micro houndstooth, rich pick and picks and some soft stripes. White is woven through many of the designs to add lightness and texture to the weave. All articles have an element of stretch which brings an added level of comfort to the wearer, vital for a suit in the warmer months.

For more formal attire the collection closes with two midnight blue articles designed to bring a more formal look and give the opportunity for a statement evening jacket or suit.



  
SCABAL



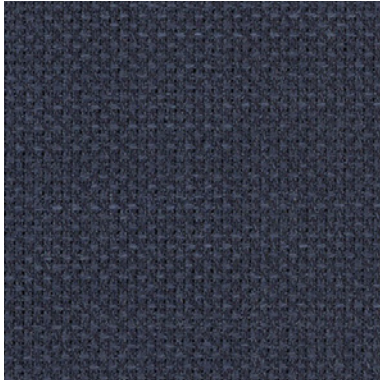
SPRING / SUMMER 2025 COLLECTION

## Jacket

RHAPSODY  
802975

## Formal Trousers

THE ROYAL  
706114



## New lining

Amalfi coast



### RHAPSODY

Rhapsody returns this season resplendent with a selection of new colours. The collection opens with a selection of brightly coloured herringbones in a wool and silk mix. They have an elegant sheen which is achieved by bringing the silk to the face of the weave and demand to be seen in colours ranging from yellow through turquoise to purples.

The final chapter showcases a soft basket weave which brings a easy texture to the fabrics. Colours here are more subtle, cool greys, light blues and olive green all feature alongside classic navy and black ideal for more traditional tastes.

Rhapsody is a collection for the colour loving jacket connoisseur.

### THE ROYAL

One of the Scabal foundation collections, The Royal offers a large selection of the highest quality Super 100's suiting fabrics. At 280gm, this is a year-round staple collection. Presenting over 80 articles there is an abundance of choice across checks, glen checks, stripes, patterns and micro designs and shadow weaves alongside a large selection of plains.

Colours remain within the sartorial palette, blues, greys, browns and blacks with small colour pops appearing within the checks to add interest and depth.

  
SCABAL



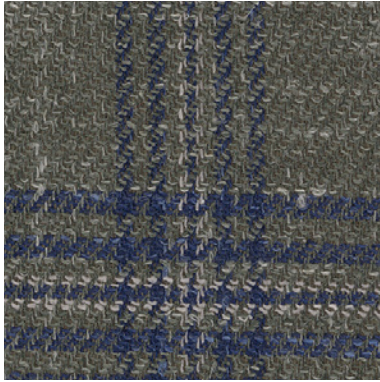
SPRING / SUMMER 2025 COLLECTION

## Jacket

AMALFI  
TREND  
853507

## Formal Trousers

THE ROYAL  
706135



### AMALFI TREND

The Amalfi collection is the essence of summer jacketing, the variety of designs, colours and textures all give the impression of a warm day and with a gentle sea breeze.

The selection is wide and varied with over 30 articles. Checks are relaxed with colours effortlessly combined to create statement looks that never feel too overpowering. The interest lies in the texture and depth of the colours and patterns where the use of thicker yarns and the combination of colours with whites create looser fabrics that have lots of character and provide additional breathability for warmer days.

There is a sophisticated colour palette light grey, soft purples, light creams and browns alongside peppermints, pinks, greens which have a linen look. There is also a wide selection of blues including some with a knitted character designed to give a casual feel.

### THE ROYAL

One of the Scabal foundation collections, The Royal offers a large selection of the highest quality Super 100's suiting fabrics. At 280gm, this is a year-round staple collection. Presenting over 80 articles there is an abundance of choice across checks, glen checks, stripes, patterns and micro designs and shadow weaves alongside a large selection of plains.

Colours remain within the sartorial palette, blues, greys, browns and blacks with small colour pops appearing within the checks to add interest and depth.



  
SCABAL



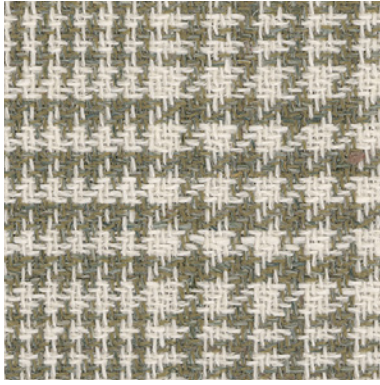
SPRING / SUMMER 2025 COLLECTION

## Jacket

AMALFI  
TREND  
853498

## Formal Trousers

PURE LINEN  
802987



### AMALFI TREND

The Amalfi collection is the essence of summer jacketing, the variety of designs, colours and textures all give the impression of a warm day and with a gentle sea breeze.

The selection is wide and varied with over 30 articles. Checks are relaxed with colours effortlessly combined to create statement looks that never feel too overpowering. The interest lies in the texture and depth of the colours and patterns where the use of thicker yarns and the combination of colours with whites create looser fabrics that have lots of character and provide additional breathability for warmer days.

There is a sophisticated colour palette light grey, soft purples, light creams and browns alongside peppermints, pinks, greens which have a linen look. There is also a wide selection of blues including some with a knitted character designed to give a casual feel.

### PURE LINEN

Pure Linen is a must-have for summer staples. The Scabal collection offers a selection of weights, feels and colours to answer the needs of summer tailoring.

Opening with 20 delavé articles, this soft washed linen is available in colours ranging from bright reds, vibrant greens, sky blues as well some essential shades of dark blues, light creams and natural browns. Moving through the collection you will see 8 shades in a heavier 260gm and for those looking for more structure a small selection at 400gm again in the essential linen colours, off white, cream, beige and navy blue.

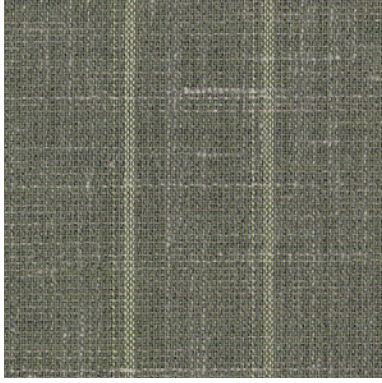
  
SCABAL



SPRING / SUMMER 2025 COLLECTION

## Suit

LIFESTYLE  
706368



### LIFESTYLE

The lifestyle collection presents a wide selection of qualities and designs to meet the varied needs of a contemporary suit wearer who is looking to create outfits that work, day to night and can be dressed up or down depending on the occasion.

Designs and colours suit the season and feature, light grey, brown and soft blue checks, cream and brown micro houndstooth, rich pick and picks and some soft stripes. White is woven through many of the designs to add lightness and texture to the weave. All articles have an element of stretch which brings an added level of comfort to the wearer, vital for a suit in the warmer months.

For more formal attire the collection closes with two midnight blue articles designed to bring a more formal look and give the opportunity for a statement evening jacket or suit.



  
SCABAL



SPRING / SUMMER 2025 COLLECTION

## Jacket

AMALFI  
TREND  
853502

## Formal Trousers

PURE LINEN  
803001



### AMALFI TREND

The Amalfi collection is the essence of summer jacketing, the variety of designs, colours and textures all give the impression of a warm day and with a gentle sea breeze.

The selection is wide and varied with over 30 articles. Checks are relaxed with colours effortlessly combined to create statement looks that never feel too overpowering. The interest lies in the texture and depth of the colours and patterns where the use of thicker yarns and the combination of colours with whites create looser fabrics that have lots of character and provide additional breathability for warmer days.

There is a sophisticated colour palette light grey, soft purples, light creams and browns alongside peppermints, pinks, greens which have a linen look. There is also a wide selection of blues including some with a knitted character designed to give a casual feel.

### PURE LINEN

Pure Linen is a must-have for summer staples. The Scabal collection offers a selection of weights, feels and colours to answer the needs of summer tailoring.

Opening with 20 delavé articles, this soft washed linen is available in colours ranging from bright reds, vibrant greens, sky blues as well some essential shades of dark blues, light creams and natural browns. Moving through the collection you will see 8 shades in a heavier 260gm and for those looking for more structure a small selection at 400gm again in the essential linen colours, off white, cream, beige and navy blue.



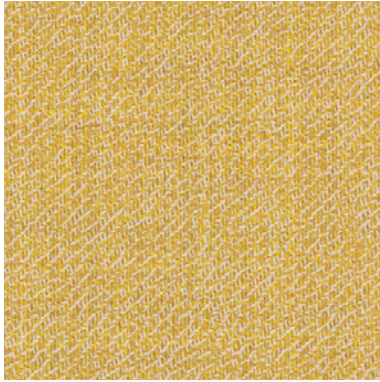
SPRING / SUMMER 2025 COLLECTION

## Jacket

HARMONY  
803023

## Formal Trousers

PURE LINEN  
803001



### HARMONY

A new introduction from Scabal, Harmony is a concise collection of 19 articles in 100% extra fine Merino Wool.

This collection has been woven with a mouline yarn which adds a rich character to each fabric and enhances both the softness of the colours and the hand feel. Colours flow from light to dark, pastel blue, salmon and mustard yellow are followed by shades of green, rust and burgundy. There is also a selection of soft tones in fawn, light grey and beige.

Harmony is designed to strike the right note whatever the occasion.

### PURE LINEN

Pure Linen is a must-have for summer staples. The Scabal collection offers a selection of weights, feels and colours to answer the needs of summer tailoring.

Opening with 20 delavé articles, this soft washed linen is available in colours ranging from bright reds, vibrant greens, sky blues as well some essential shades of dark blues, light creams and natural browns. Moving through the collection you will see 8 shades in a heavier 260gm and for those looking for more structure a small selection at 400gm again in the essential linen colours, off white, cream, beige and navy blue.



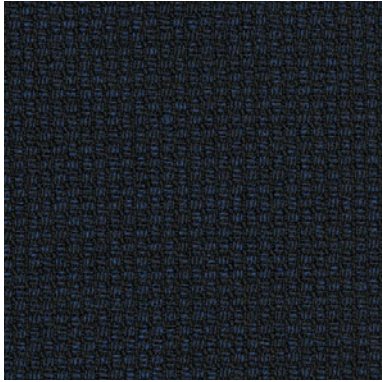
  
SCABAL



SPRING / SUMMER 2025 COLLECTION

## Jacket

CONNECT  
706060



## New lining

Mosaic



## Formal Trousers

PURE LINEN  
803001

### CONNECT

A new innovation from Scabal, Connect is a contemporary range of fabrics designed with comfort and softness at its heart. The collection opens with a selection of textured fabrics, all with a knitted appearance and a soft feel, ideal to create the relaxed garments required for a busy modern life. Although they appear knitted, these fabrics are all traditionally woven, it is the skill of the weavers that create this alternative look and finish.

The superior stretch throughout the entire collection ensures that the fabrics are equally suitable for a soft unconstructed jacket as a robust and hard-working pair of trousers. The added stretch brings some crease resistance but more importantly ensures that garments return to their original shape each time they are worn.

The collection closes with a small range of plain fabrics which have a deliberately overconstructed finish, and when combined with the colour palette of browns, greens, camel, blues and greys gives them a very modern look.

### PURE LINEN

Pure Linen is a must-have for summer staples. The Scabal collection offers a selection of weights, feels and colours to answer the needs of summer tailoring.

Opening with 20 delavé articles, this soft washed linen is available in colours ranging from bright reds, vibrant greens, sky blues as well some essential shades of dark blues, light creams and natural browns. Moving through the collection you will see 8 shades in a heavier 260gm and for those looking for more structure a small selection at 400gm again in the essential linen colours, off white, cream, beige and navy blue.